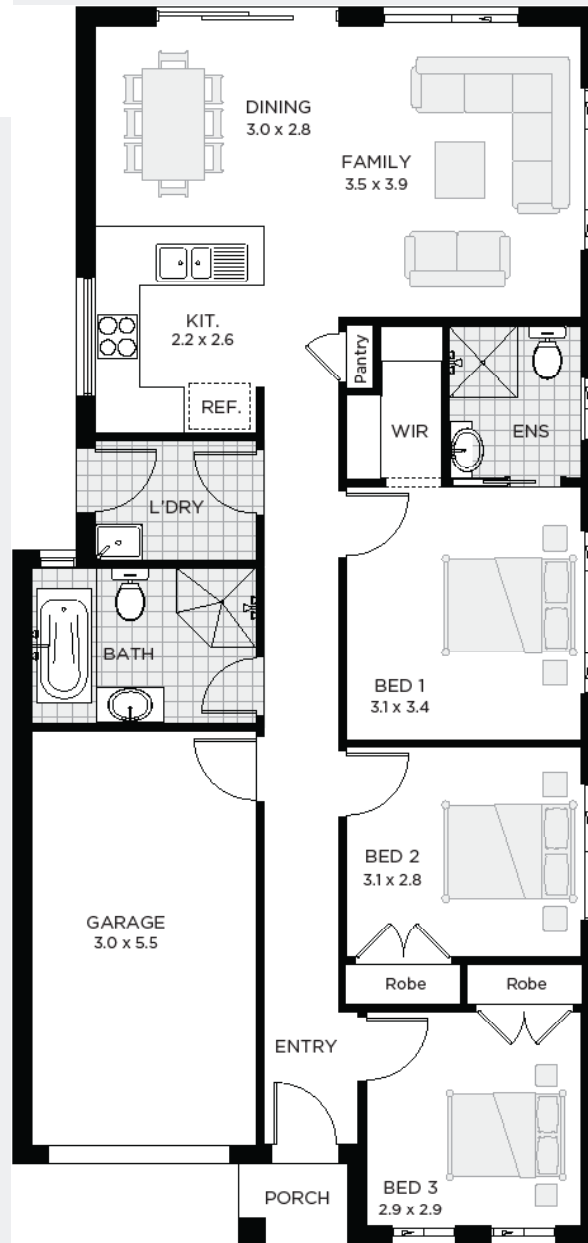


# HOUSE & LAND PACKAGE



championhomes.com.au

\*Landscaping, retaining walls, fencing and decorator items excluded. Purchasers to confirm final inclusions with Champion Homes salesperson. All drawings, images and photographs are for illustrative purposes only and should be used as a visual guide only. Champion homes reserves the right to revise plans, specifications and prices without notice or obligation. Note this plan is indicative only and may be amended at any time to suit site conditions and/or estate conditions/requirements. Site costs based on maximum 500mm fall over block with even cut & fill and "M" or "H" slab classification. Basix based on 3000 litre above ground rainwater tank, R2.2 insulation to external walls of living areas and R4.0 to roof ceiling excluding garage.

## LOT C, MARSDEN PARK

# \$886,900

### FREEDOM 119, Contemporary Facade

<b>119m<sup>2</sup></b>	BED	3
Approx. House Size	BATH	2
	CARS	1



### Inclusions

- Stone benchtop to kitchen
- Standard site costs and BASIX
- Council development application fees
- Concrete driveway
- 2.59 high ceilings
- 10 LED downlights
- Floor tiles to porch, patio, living and wet areas
- Carpet to remainder
- Air conditioning
- 900mm appliances
- Gas pack including instantaneous hot water
- Termite treated frames
- Panel lift garage door including remotes
- Alarm

Call Laurent  
0437 797 692

